



STABLE, DURABLE AND QUIET

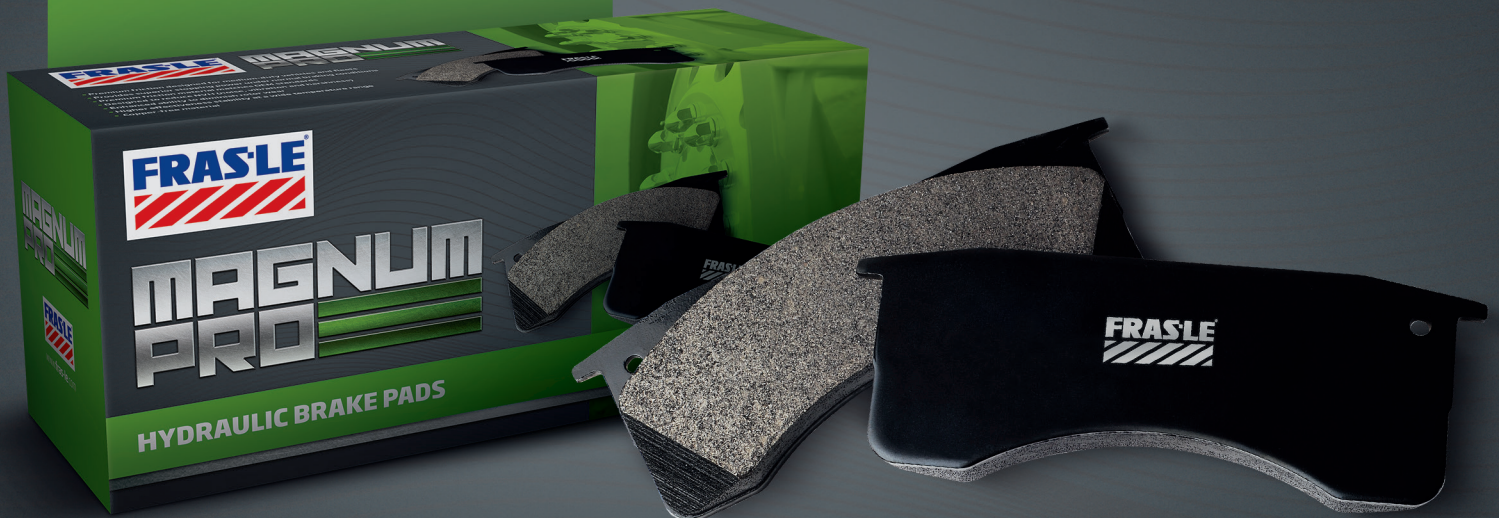
Magnum Pro brake pads are developed to provide a reliable braking power for work trucks and medium-duty vehicles with a superior durability on the rotors. These durable brake pads also outperform the competition on measures like brake noise, wheel dust, fade, effectiveness stability and stopping power.

Magnum Pro's copper-free material has the exceptional quality demanded by the OEMs.

**ENGINEERED, MANUFACTURED
AND PROVEN BY THE LEADERS
IN BRAKE TECHNOLOGY AND
INNOVATION**

PREMIUM FRICTION FOR WORK TRUCKS

- Premium friction designed for medium-duty vehicles and fleets
- Superior stopping power under normal braking conditions
- Premium friction material matches OEM standards
- Designed to reduce NVH (noise, vibration and harshness)
- Enhanced ability to diminish rotor wear
- Higher effectiveness stability at a wide temperature range
- Copper-free material



Original
Equipment
Manufacturer

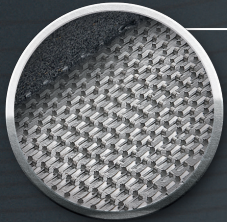


Asbestos
Free

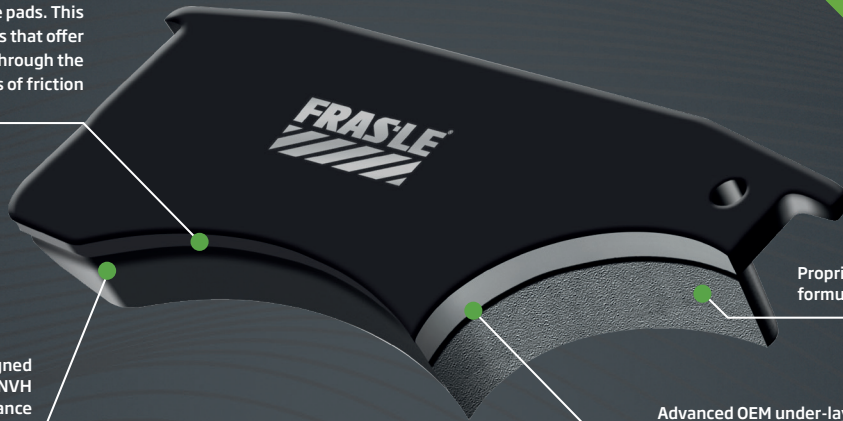


MAGNUM PRO

Advanced MRS (mechanical retention system) for enhanced friction-to-plate bonding dramatically improving shear strength and life-cycle of brake pads. This provides you with brake pads that offer superior brake system safety through the last millimeters of friction



Precision-designed chamfers and Slots for NVH control and performance



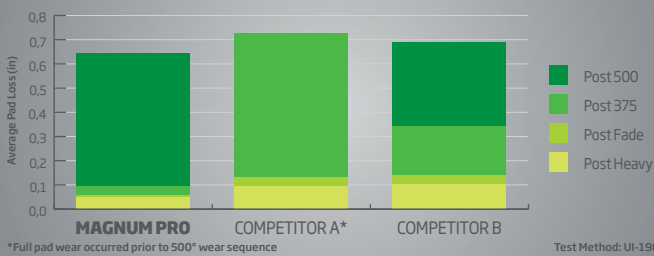
Proprietary OE-approved formulation*

Advanced OEM under-layer friction material for thermo-neutralization, enhanced adherence and noise control*

- 100% asbestos and copper-free formulations
- Powder coat finish for corrosion resistance
- Fully post cured for improved initial effectiveness*

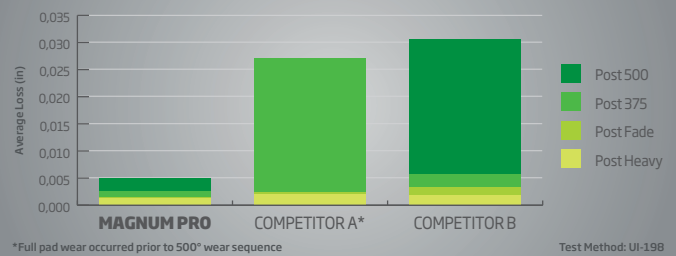
Stainless steel caliper hardware kit included*
*When applicable.

PAD WEAR



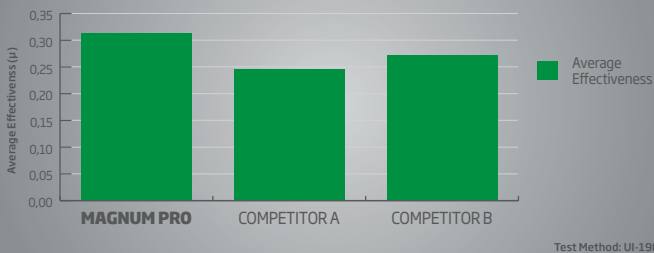
KEY NOTES:
Pad measurements taken at four points: Post Heavy effectiveness, Post Second Fade and Recovery, Post 375 Deg Wear and Post 500 Deg Wear.

ROTOR WEAR



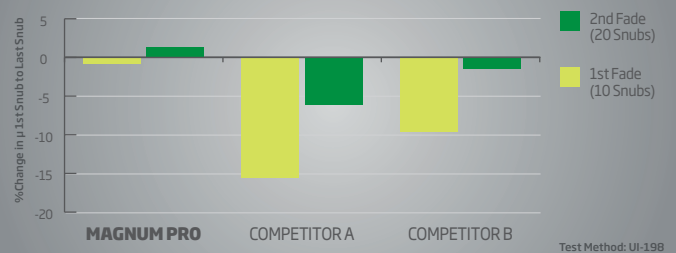
KEY NOTES:
Rotor measurements taken at four points: Post Heavy effectiveness, Post Second Fade and Recovery, Post 375 Deg Wear and Post 500 Deg Wear.

BRAKE EFFECTIVENESS



KEY NOTES:
A higher coefficient of friction generates more torque on the rotor. Data includes pre-burnish effectiveness, post burnish effectiveness; light load effectiveness, heavy load effectiveness and post fade effectiveness.

BRAKE FADE



KEY NOTES:
Calculations based on the coefficient of friction change from first snub and the last snub. Negative % change denotes a decrease in coefficient of friction i.e. Brake fade. Positive % change denotes an increase in coefficient of friction. i.e. Brake fade did not occur.



FRAS-LE NORTH AMERICA
MICHIGAN SALES & ENGINEERING OFFICE
1000 N. Opdyke Rd. Suite M, Auburn Hills, MI 48326 - USA
Phone: 1-800-243-2959 | customerservice@fras-le.com

www.fras-le.com



/frasleofficial

